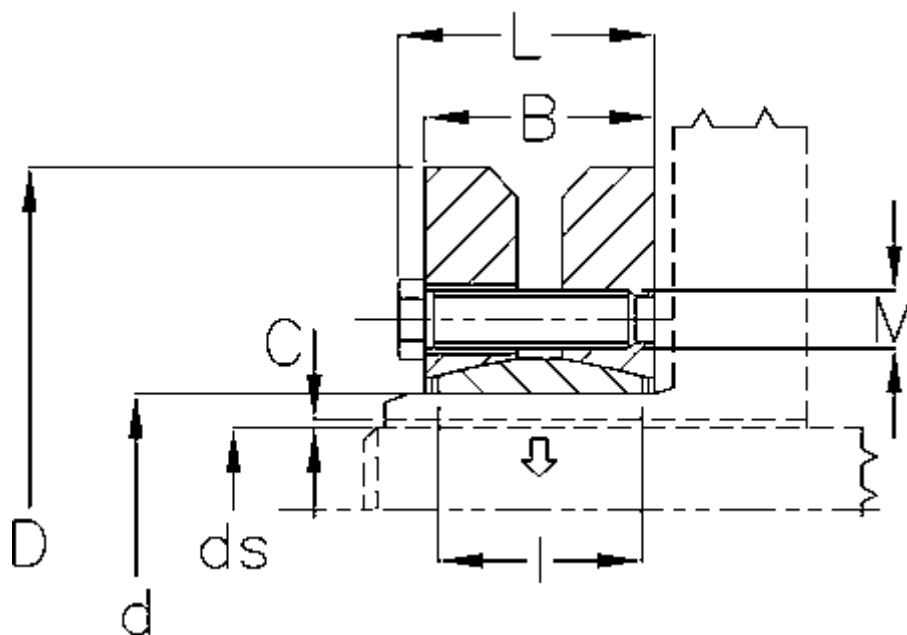


Varenummer: 438000260

Beskrivelse: Rota-fix spændelement SD 260

## Mål



B mm	= 120
C maks.	= 0,101
d H8 mm	= 260
D mm	= 430
ds mm	= 190
F kN aksialkraft	= 1760
L mm	= 132
l mm	= 103

M mm	= M20
T Nm drejningsmoment	= 165000
Ts Nm boltetilspændingsmoment	= 490